



Area Manager Contact:

Ashley Robinson

1150 Rosenthal Blvd NW.
rosenthalst@homesbyavi.com
587-525-5208



Unless indicated, prices do not include GST and are subject to change. Floorplan, elevation and sq ft may not be exactly as shown. Builder reserves right to make changes. Rendering is artist concept only. E&OE.



Benedict

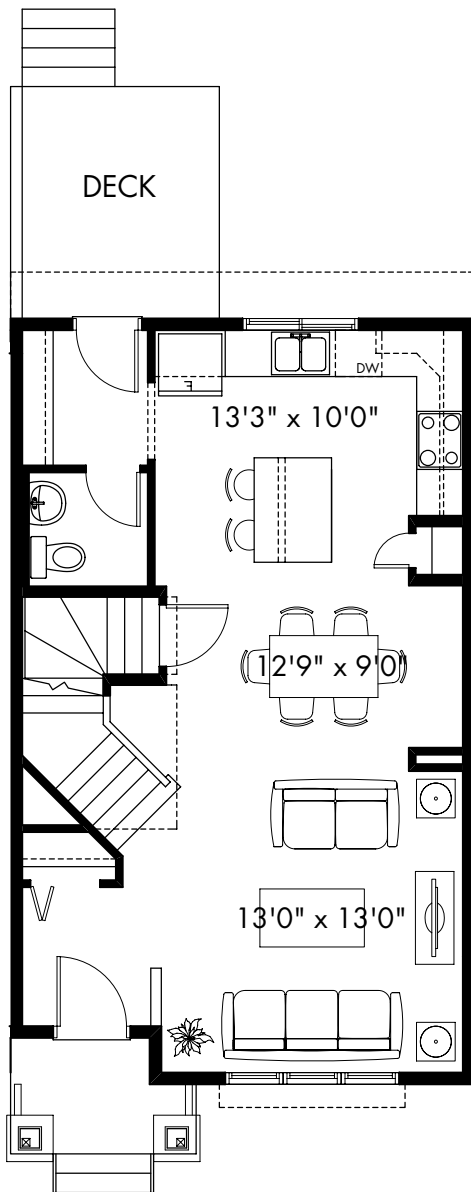
Available for Leaseback

New show home now open! No condo fee
Street Towns in Rosenthal.

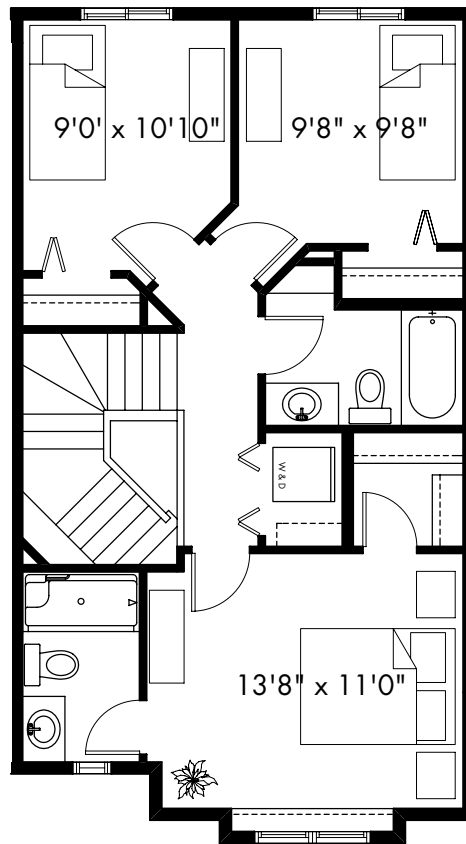
1152 ROSENTHAL BLVD.

The **BENEDICT**

1334 SQ FT



MAIN 648 sq ft



UPPER 686 sq ft

The **BENEDICT**

1152 ROSENTHAL BOULEVARD | 1334 SQ FT

INCL. HOME, LAND, G.S.T.

YOUR HOME INCLUDES

- No condo fees
- 9' high main floor ceilings
- Front and back landscaping
- Stainless steel kitchen appliance package
- 20' x 22' rear double detached garage
- Rear deck with a gas line for a future BBQ
- Home protected under Alberta New Home Warranty Program
- Shaw Welcome Home Package for personal TV and high speed internet



For more information please contact the showhome at 587.525.5208

