



**Area Manager Contact:**

**Cory Ferguson**

92 Belmont Terrace SE

Belmont@homesbyavi.com

587-349-7832

Unless indicated, prices do not include GST and are subject to change. Floorplan, elevation and sq ft may not be exactly as shown. Builder reserves right to make changes. Rendering is artist concept only. E&OE.

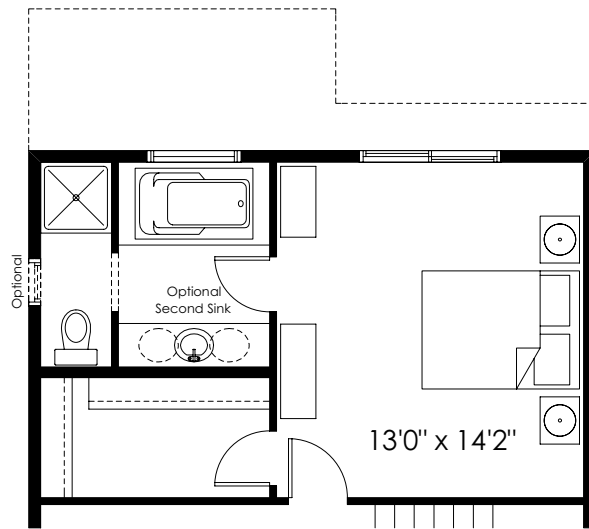


## BELMONT

**Luka**

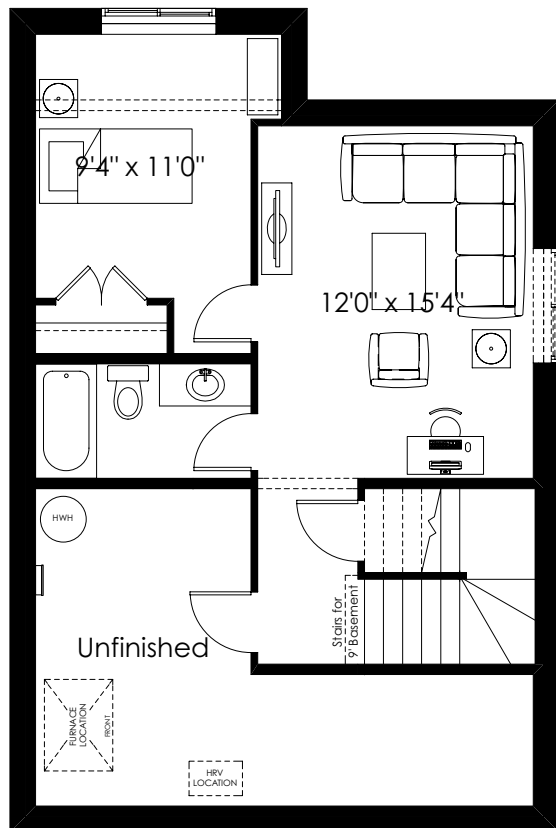
starting at \$419,900 including GST

# Upper Floor OPTIONS



Partial Second Floor Plan with  
Optional Upgraded Ensuite  
(Adds 48 Sq. Ft. to Second Floor)

# Basement OPTIONS



Future Basement Room Layout  
457 Sq. Ft. (Finished Area)  
(NOT INCLUDED IN CONTRACT)

Prices subject to change without notice. Actual floor plan, elevation and square footage may not be exactly as shown. Builder reserves the right to make changes without notice. Rendering is artist concept only. E&OE.

homesbyavi.com

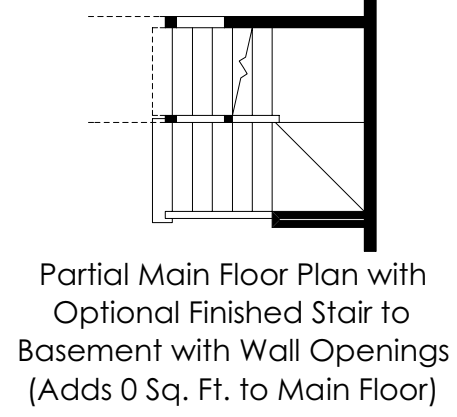
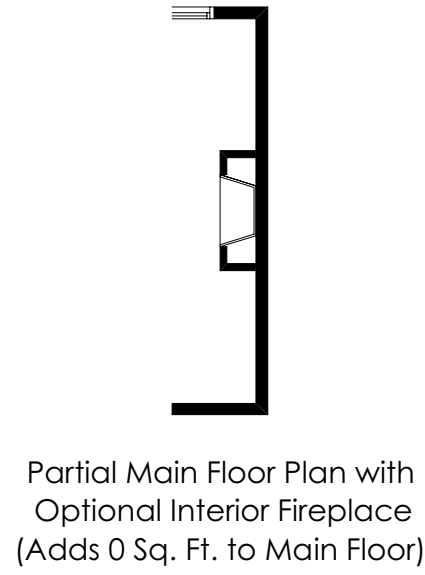
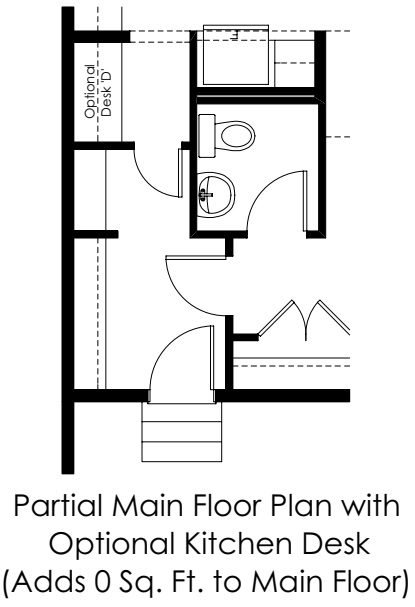
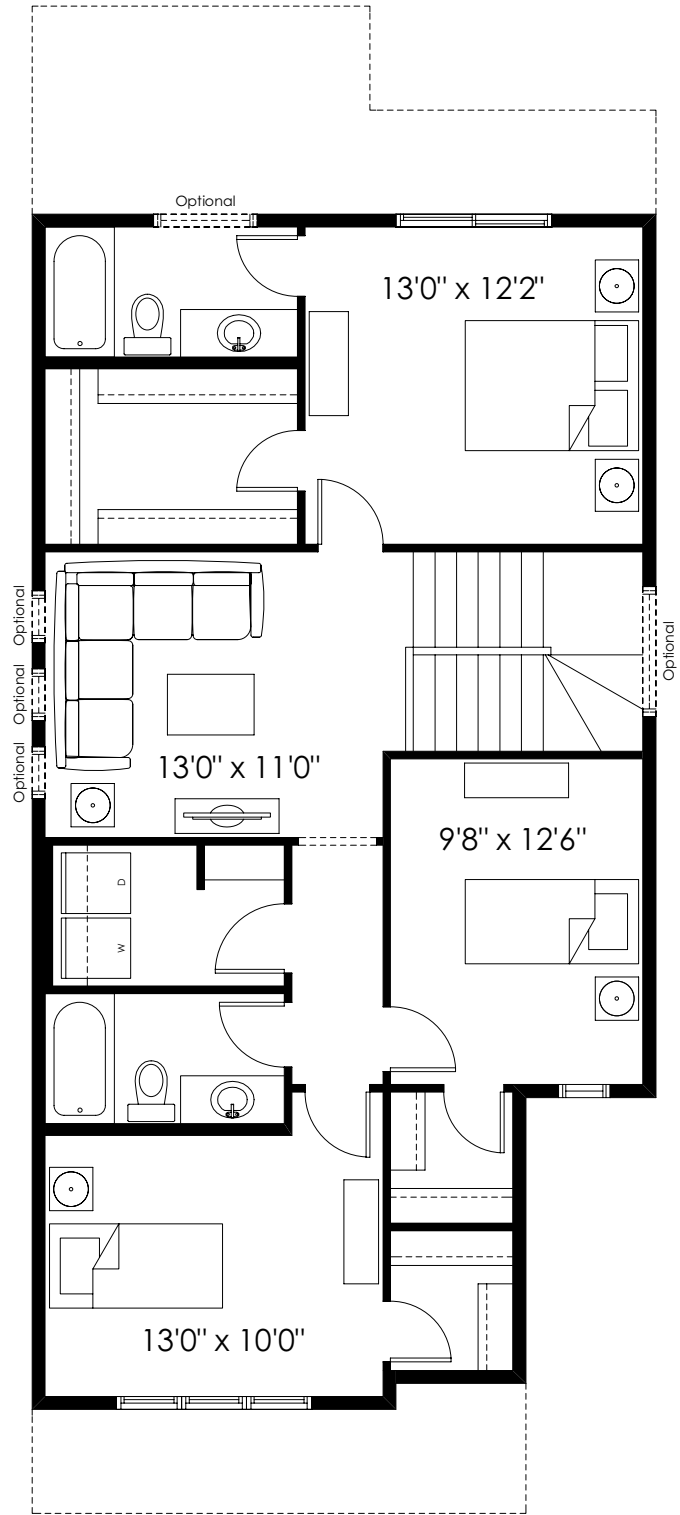
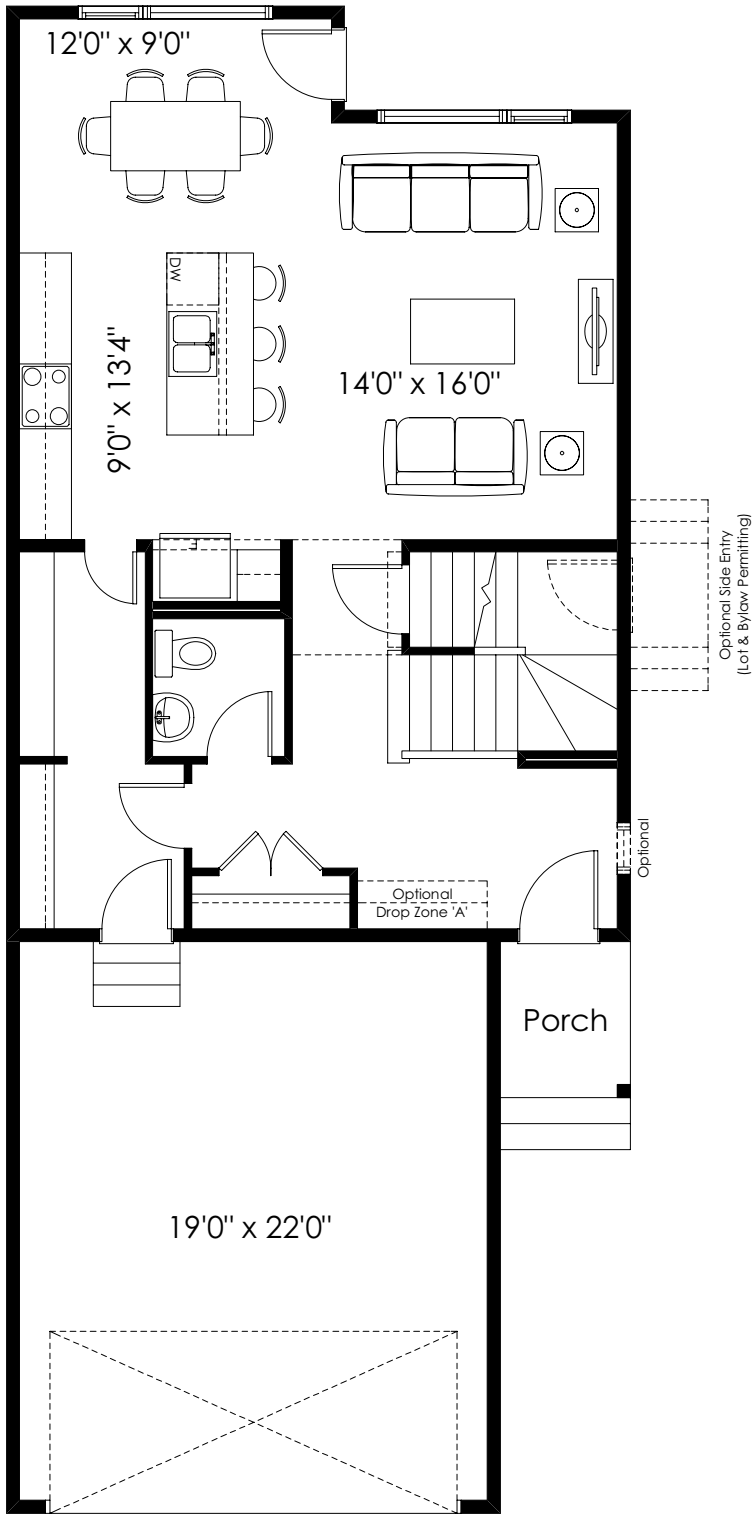


24'  
WIDE

# the Luka

1859 SQ FT TO 1907 SQ FT





Main Floor 820 SQ FT

Upper Floor 1039 SQ FT